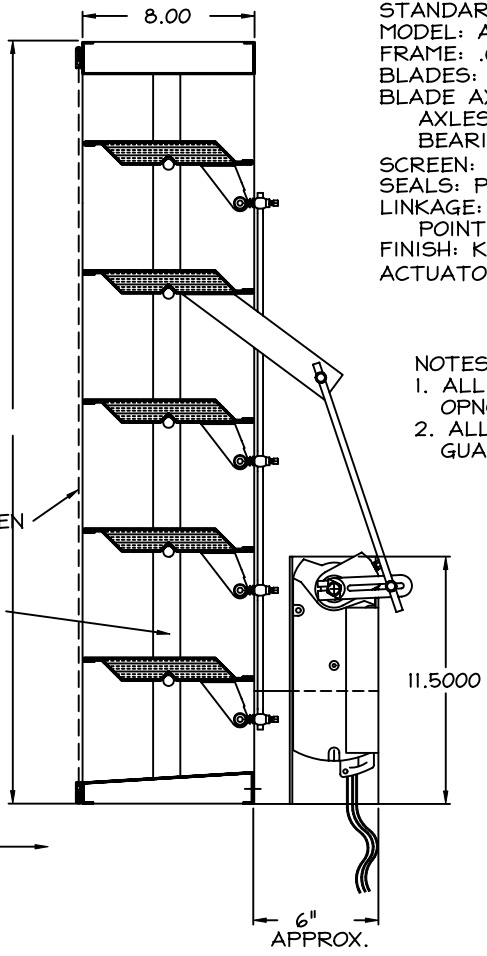


ELEVATION @ INTERIOR SIDE



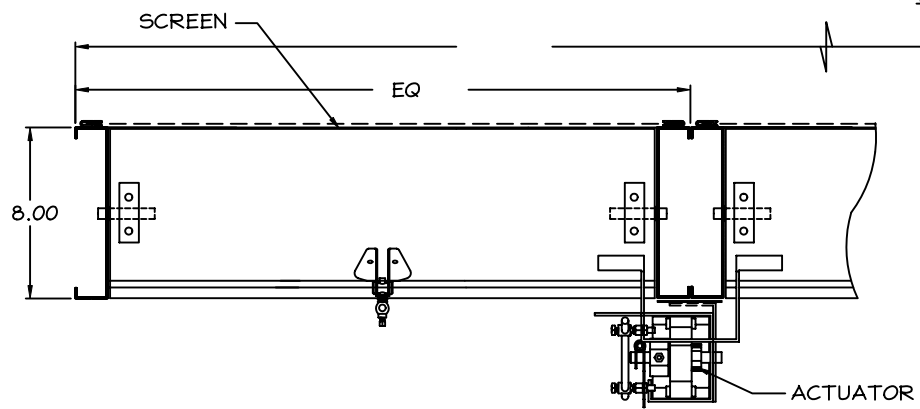
SECTION - "B"

STANDARD CONSTRUCTION
 MODEL: AFI-08-3Q7X-FX
 FRAME: .081" FORMED ALUM. 5005-H34
 BLADES: .125" THK. FORMED ALUM. 5005-H34
 BLADE AXLES AND BEARINGS:
 AXLES - 1/2" DIA. PLATED STUB-SHAFT
 BEARINGS - 1/2" BRONZE OILITE
 SCREEN: 1/2" MESH X .063" ALUM. WIRE SCREEN IN FRAME
 SEALS: POLYURETHANE FOAM BLADE & ALUM. JAMB SEALS
 LINKAGE: PLATED STEEL, MOUNTED AT THE CENTER POINT OF BLADE
 FINISH: KYNAR 500 3-STEP COLOR AS SELECTED
 ACTUATOR: SIEMENS GGD221.IU 120 Vac 2-POSITON W/ SPRING RETURN

- NOTES:
 1. ALL DAMPERS TO BE FABRICATED 1/4" UNDER LISTED OPNG SIZES UNLESS OTHERWISE SPECIFIED "ACTUAL".
 2. ALL OPNG SIZES TO BE FIELD VERIFIED AND GUARANTEED BY OTHERS PRIOR TO FABRICATION.

DAMPER SCHEDULE
 TAG QTY OPNG SIZE (W X H)

ADJ. LVR. W/ JUMPER BRACKET W/ DIRECT DRIVE



SECTION - "A"

SAFE-AIR  DEPENDABLE PRODUCTS SINCE 1965
DOWCO 
 1855 SOUTH 54TH AVENUE, CICERO, ILL. 60650

ARCH/ENGR:		CUSTOMER:					
REV.		DESCRIPTION		DATE	BY	PROJECT:	TITLE: AFI-08/SERIES
DATE:		DRAWN: JN		DRWG #:			
		CHKD: JN					